

Construction kit

Railway Station (MZA)
Neo-Mudéjar style

Scale 1:160

» Brief historical overview.

The current Pinto station was built in 1925 over the original station, inaugurated by Queen Isabel II on 9 October 1851, as part of the 2nd railway line in Spain, Madrid - Aranjuez, which was demolished during the civil war.

The new construction from 1925 was part of the MZA line (Madrid - Zaragoza - Alicante), in the neo-mudéjar style, built in stone and brick with ceramic inlays from Talavera. It has two floors with wide openings and is surrounded by a stone plinth with cushioned stonework. Its main function today is to receive travellers, but in the past the upper floor was used as a workers' residence. Pinto station was the first of six stations to be built on this line, practically identical except for minor differences, which we also offer in the catalogue with the following references.

Pinto	(Madrid)	Ref.: 02KS0100
Valdemoro	(Madrid)	Ref.: 02KS0101
Ciempozuelos	(Madrid)	Ref.: 02KS0102
La Gineta	(Albacete)	Ref.: 02KS0103
Minaya	(Albacete)	Ref.: 02KS0104
Río Zancara	(Ciudad Real)	...	Ref.: 02KS0105

KIT CONTENTS

1 STRUCTURES

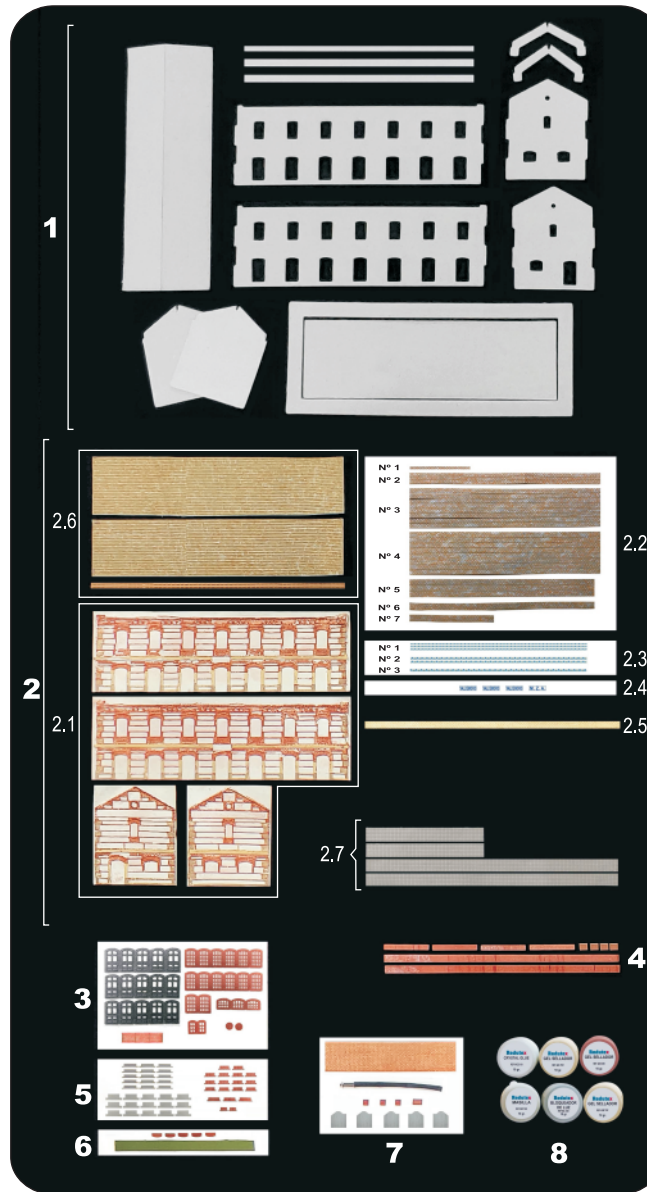
In cardboard reinforced with 1.4 mm thick acrylic resin.
(Rectangular two-storey gabled building).

- 1.1 Two front façades
- 1.2 Two side façades
- 1.3 Two interior partitions
- 1.4 Two inner trusses
- 1.5 Three longitudinal main beams
(two of 4 mm. and one of 3 mm.)
- 1.6 Indoor flooring
- 1.7 Outdoor perimeter flooring
- 1.8 Cover bracket

2 COATINGS

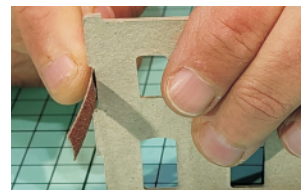
Façades:

- 2.1 Preconfigured typology - Two front façades and two side façades



TIP:

Go over any imperfections or burrs on the parts with a knife or sandpaper, specially on the inside corners of the assembly areas.



Other textures that complete the configuration of the typology.

2.2 Redutex 3D adhesive texture strips cut in calibrated widths of:

Opus Incertum	Ref.: 160OP123
Nº 1	1 strip (2 mm. wide x 30 mm. length)	
Nº 2	2 strips (2.2 mm. wide x 145 mm. length)	
Nº 3	6 strips (3.1 mm. wide x 145 mm. length)	
Nº 4	4 strips (3.5 mm. wide x 145 mm. length)	
Nº 5	2 strips (3.8 mm. wide x 145 mm. length)	
Nº 6	1 strips (4.7 mm. wide x 145 mm. length)	
Nº 7	1 strip (5.5 mm. wide x 21 mm. length)	

2.3 Tile reproduction strips in adhesive vinyl.

Nº 1	3 strips 0.8 mm. wide
Nº 2	2 strips 1.0 mm. wide
Nº 3	1 strips 1.8 mm. wide

2.4 Stickers labels of town (3 pcs.) and the MZA line (1 pc.)

2.5 Nº 8 Redutex 3D adhesive texture of limestone block for skirting board Ref.: 148BL121

2.6 Redutex 3D adhesive textured roof coating.

A) Flat roof tile	Ref.: 160TC122
B) Ridge or tile coping	Ref.: 148RT122

2.7 Outdoor floor covering in 3D adhesive texture Redutex.

- Sidewalk texture 4 strips Ref.: 160AC111

3 DOORS AND WINDOWS

- Doors (15 pcs.) and handles (30 pcs.) Ref.: 02PT0915

- Windows main façades (14 pcs.)
 - Windows side façades (3 pcs.)
 - Small windows on side façades .. (2 pcs.)
 - Windows (porthole) side façades. . (2 pcs.) } Ref.: 02VT0913

4 CORNISES (In acrylic resin reinforced with fibreglass)

- Pieces of 165 x 5 mm. (2 pcs.)
- Pieces of 31 x 3 mm. (4 pcs.)
- Pieces of 7 x 5 mm. (4 pcs.)

5 WINDOWSILLS OR FLASHINGS, STEPS AND STEPS NOSINGS FOR DOORWAYS

6 BLINDS AND SUPPORT

7 CHIMNEYS

8 ASSEMBLY PRODUCTS

Crystal Glue (Ref.: 010CGR01), Putty (Ref.: 010MSR01), Cream Sealing Gel (Ref.: 010GSR02), Brick Red Sealing Gel (Ref.: 010GSR09), Light grey Sealing Gel (Ref.: 010GSR15) and Light Blocker (Ref.: 010BLR21).

Containers included are 10 g., for kits only.

(Sold separately in 30 g. packs with application cannula).

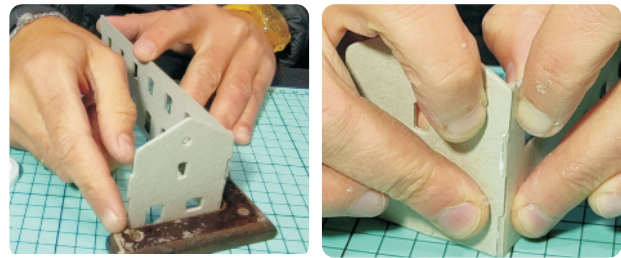
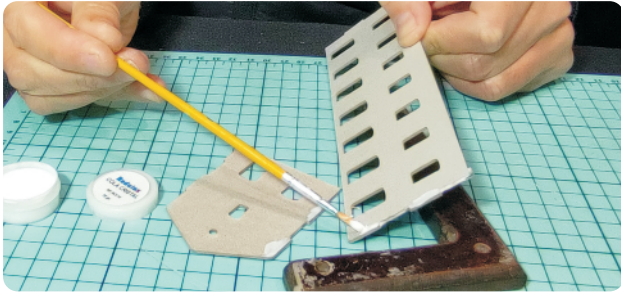
Step by step

Although in some cases the order of assembly may vary, to avoid unpleasant surprises, it is advisable to follow the order suggested below.

1 Structure

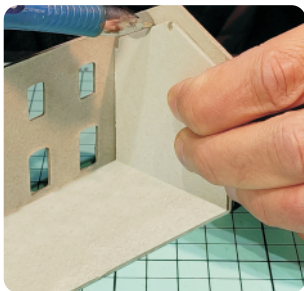
1a.

- Glue a front façade (longer side) and a side façade (short side) by applying the supplied glue, **Crystal Glue** (quick-drying, transparent and flexible acrylic glue), with a brush in the contact areas.
- Repeat the operation with the other two front and side façades. See image.

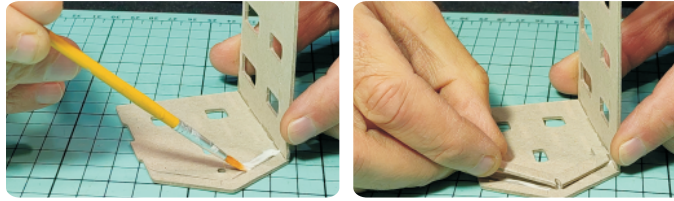


1b.

- Mark with a pencil, using as a template one of the partitions to mark the line where to glue the trusses that will support the two side sleepers and the central sleeper, aligned with the partitions.

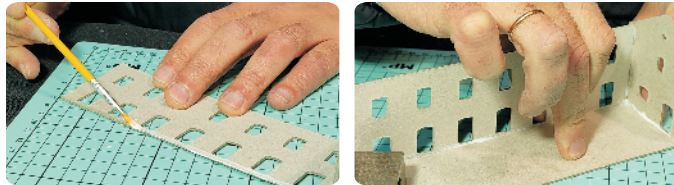


- Then apply **Crystal Glue** and glue the trusses, as shown in the picture. Repeat on the opposite side.



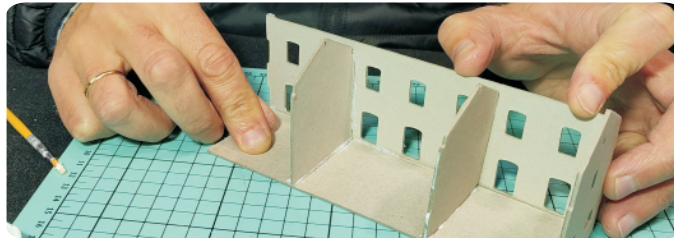
1c.

- Glue the floor on one of the already assembled dihedrals by applying **Crystal Glue** with a brush on the two edges of the inner floor and on the inner bottom of the façades.

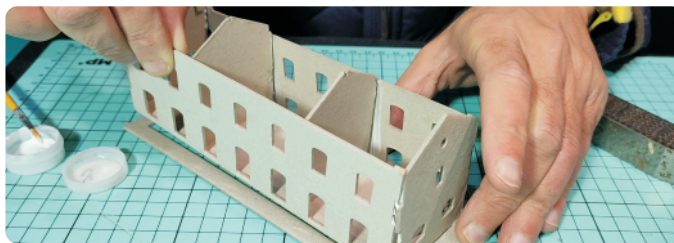


1d.

- Glue the partitions perpendicular to the façade and floor, approximately between two doors and windows, as shown in the picture.

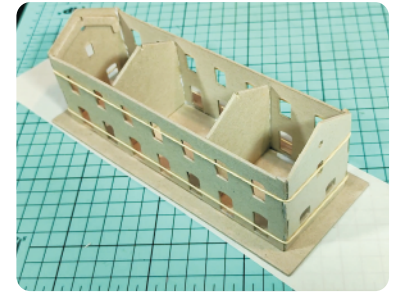


- Join the assembly obtained with the other façade by applying **Crystal Glue** with a brush on both parts of the contact areas, helping you with the outer perimeter floor, **without gluing it**, so that it presses against the structure. Once glued, remove the outer perimeter floor and set it aside. We will glue it later.



TIP

- You can help yourself with some rubber bands to make sure it sticks well.
- Once the structure has been glued, remove the perimeter floor and set aside.

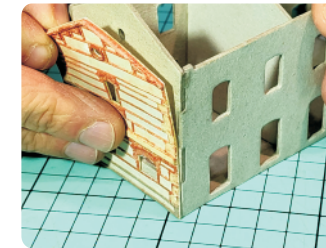
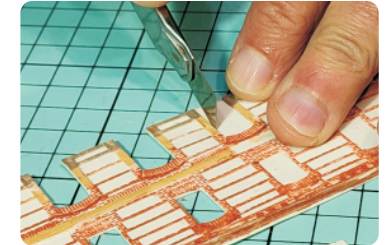


2 Façade cladding

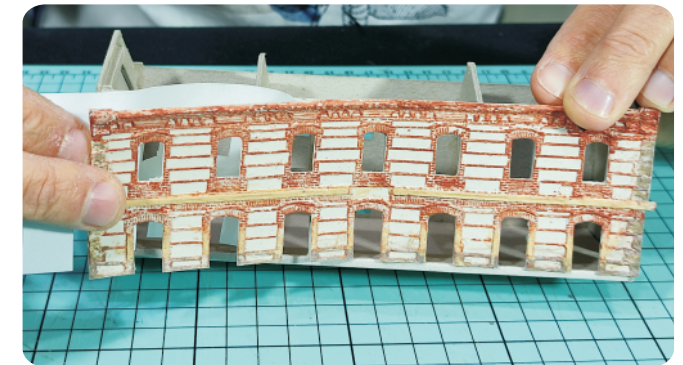
Self-adhesive 3D Redutex texture of the pre-configured neo-mudéjar type.

2a.

- Cut the holes in the doors and windows of the textures, preferably with a fine-tipped cutter.

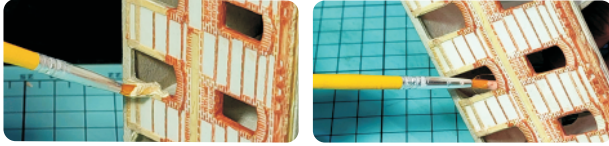


- Glue the two short sides first and then the long sides, which will cover the edges of the first two sides. Then we will hide the edges that are now visible.

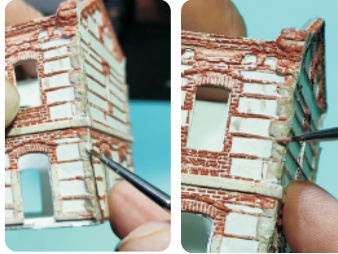


2c.

- Apply with a brush the cream **Sealing Gel** (Ref.: 010GSR02) on the edges of the lower door openings, which coincide with the columns of the same colour, and the brick red **Sealing Gel** (Ref.: 010GSR09) on the parts that coincide with the bricks of the doors and on all the openings corresponding to the windows.



- Seal all the joints on both sides, hiding the visible edges with the corresponding colours: Light grey **Sealing Gel** (Ref.: 010GSR15), on the blocks, red on the bricks (Ref.: 010GSR09) and cream (Ref.: 010GSR02) on the perimeter belt.



3 Doors and windows

3a.

- Cut the doors and windows on the outside of the widest part.



3b.

- Apply **Crystal Glue** to the outer perimeter of the door or window and glue it to the inside of the structure. Then look at the outside of the façade, while gently centering and aligning at the top of the opening, on the inside of the structure.



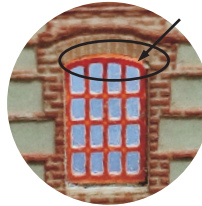
- In windows, more space will be left at the bottom for the subsequent installation of the windowsills. See image.



4 Light blocker

OPTIONAL

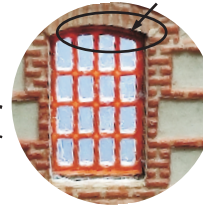
In case you want to illuminate the inside of the model, before gluing the cover, it is advisable to seal the inside perimeter of doors and windows with the included **Light Blocker** (Ref.: 010BLR21).



Before applying the light blocker



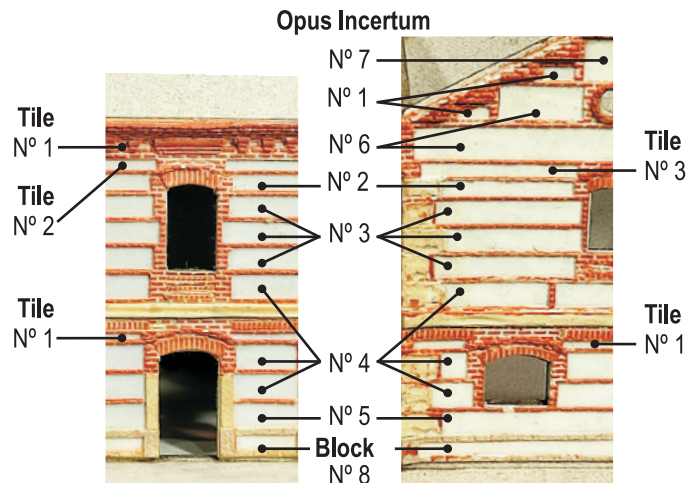
After applying light blocker



5 Other textures, to complete the typology.

In strips of calibrated widths of:

- Textures of Opus Incertum (Ref.: 160OP123)
- Block Textures (Ref.: 148BL121)
- Tile strips.
- Glue the corresponding strips of each texture, according to their place and numbering indicated in the image below.



5b.

- Cut, with a cutter, at the boundaries in each box, as shown in the picture.



Opus Incertum



Tiles

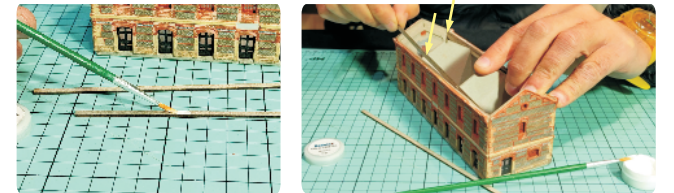


Blocks

6 Main beams

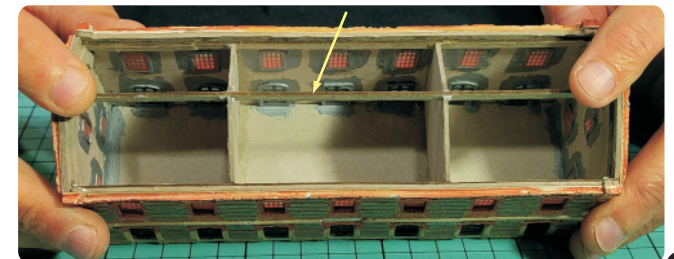
6a.

- **Two 4 mm side beams:** Glue them with **Crystal Glue** to the inside of the structure aligned by the lateral grooves of the partitions and the trusses, which we glued in point 1b, as shown in the image.



6c.

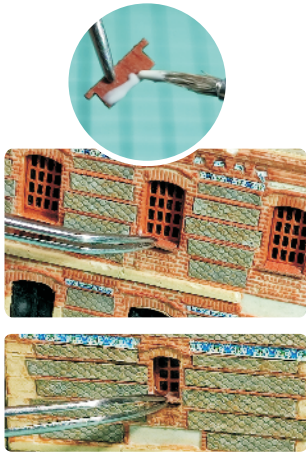
- Glue the **central longitudinal beam of 3 mm.** in the same way, through the grooves included in the corners of the partitions and in the previously glued trusses, as shown in the picture.



7 Windowsills

7a.

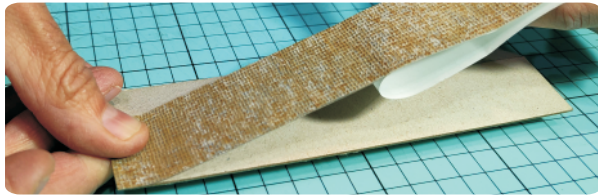
- Three sizes of windowsills are included, depending on the size of the windows. Glue in place by applying **Crystal Glue** to the back of the windowsills.



8 Roof covering

8a. **Castellana Roof Tile - polychrome** (Ref.: 160TC121)

- Glue the tile texture to the roof support, aligned from the top. Make sure that the tile orientation is correct, according to the water fall.

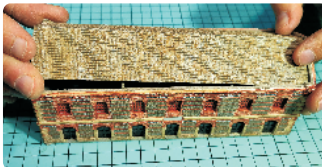


- **Caution: all operations internal to the structure must be completed. !**
- Cover gluing. Apply **Crystal Glue** to the inner corner and sides.



8b.

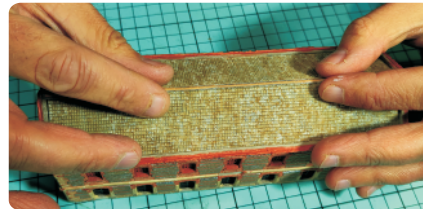
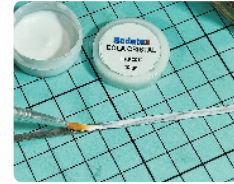
- Glue the roof assembly to the trusses, the two side beams and the central beam.



9 Ridge or tile edge

9a.

- Apply **Crystal Glue** to both contact areas. Hold with both hands at the ends and keep some tension to glue as straight as possible at the apex of the cover.

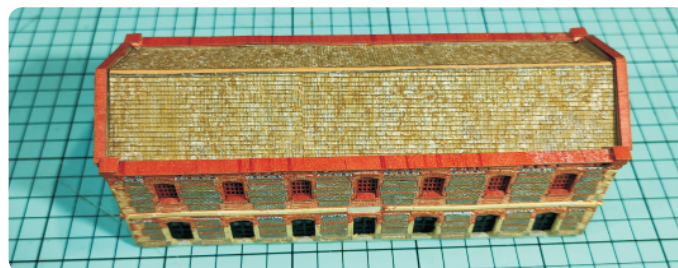
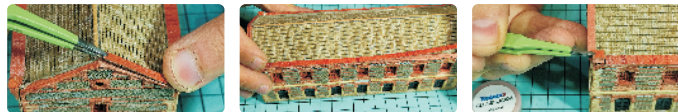


- Then gently press the ridge with your fingertips to fix it firmly.

10 Cornices

10a.

- Glue the cornices with red brick **Sealing Gel** (Ref.: 010GSR09), at the corresponding location. Two long, four short and four end caps on the four corner turrets. See image.



11 Stickers labels

11a.

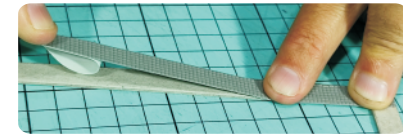
- Stick the sign with the name of the MZA line on one side of the main façade. On the other three sides put the name of the corresponding town.



12 Sidewalk

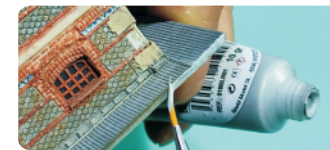
12a.

- Glue the sidewalk strips (Ref.: 160AC111), on the exterior floor, according to the configuration of the drawing.



12b.

- Glue the outer floor assembly to the structure.



12c.

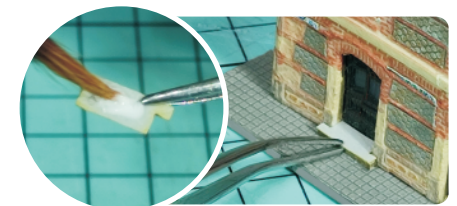
- Apply **Light Blocker** dissolved with a little water (Ref.: 010BLR21) to finish off and seal the perimeter edge of the pavement.

12d.

- Apply **Crystal Glue** to the door steps and glue them to the edge of the door.



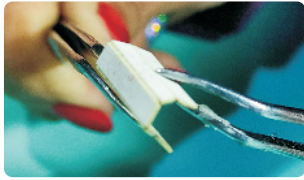
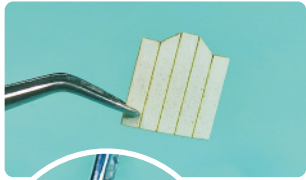
- Then use **Crystal Glue** to glue the trim in the centre of the step.



13 Chimneys

13a.

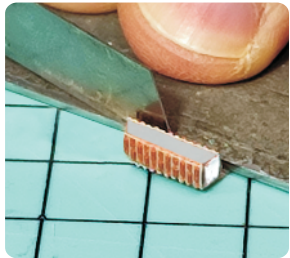
- Fold inwards along the marked lines.



- Apply **Crystal Glue** to the narrower flange of the two ends and glue inside the development, to complete the shape of the chimney.

13b.

- Introduce a little **Putty** (Ref.: 010MSR01) inside the chimney through the two holes to give it more consistency. Leave it to harden.



13c.

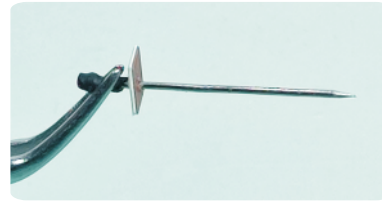
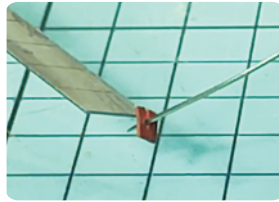
- Paste the texture on one side and cut flush. Do the same on the opposite side.
- Glue the texture on the two remaining sides, which will hide the edges of the first two sides.

13d.

- Insert approximately half of the heat shrink tubing into the pin at the head end.
- Bring a lighter or other heat source close to the pin, at a suitable distance, while rotating it with your fingers.



- Insert the pin into the hole in the lid.

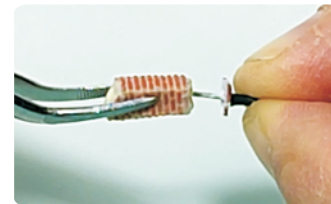


- Cut off leaving approximately 2 to 3 mm.

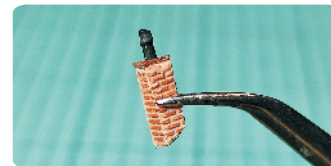


(The pin can be replaced by a wire bent at one end).

- Apply **Crystal Glue** and insert into the chimney.

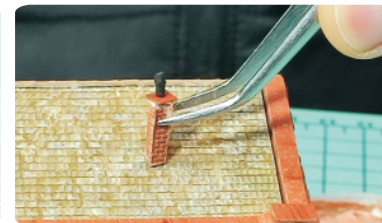
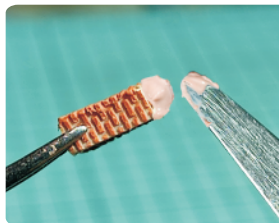


- Finished chimney, carry out the same procedure for the rest of the chimneys.



13e.

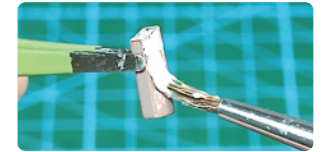
- Glue to the deck with **Crystal Glue** at the desired location. Then apply brick red sealing gel (Ref.: 010GSR09) to the edge of the roof as an asphalt seal. (It can also be glued directly with red sealing gel).



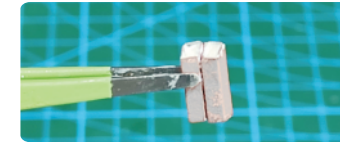
13.1 Double chimney

13.1 a.

- Carry out the same procedure as explained in section 13a until you have two pieces of chimney.



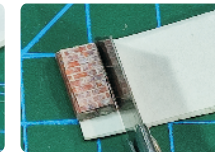
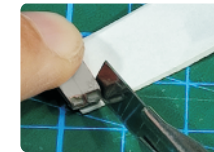
In this step we can introduce the **Putty** (Ref.: 010MSR01), inside the chimney to give it more consistency.



- Glue the two chimneys together by applying **Crystal Glue** on both sides. See image.

13.1 b.

- Glue the texture on one side of the double side of the chimney and cut flush. Do the same on the opposite side. Do the same operation until the double chimney is completely dressed. See image.

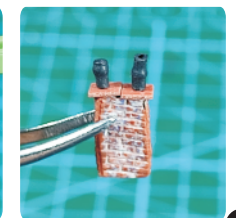
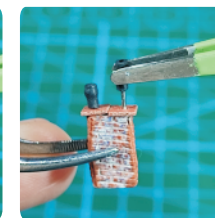
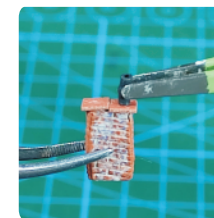
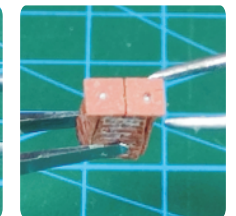
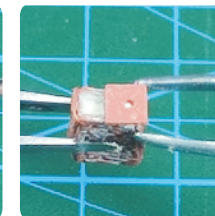
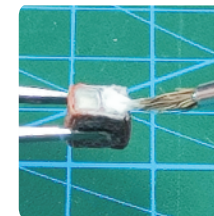


13.1 c.

- Perform the same procedure as explained in 13d to obtain the two smoke outlets.

13.1 d.

- Glue the chimney caps and place the smoke outlets.



13.1 e.

- Glue the chimney to the cowl, in the same way as described in the procedure explained in 13e.

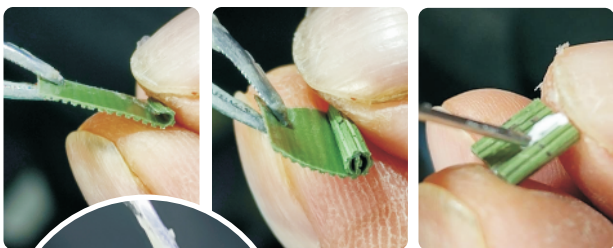
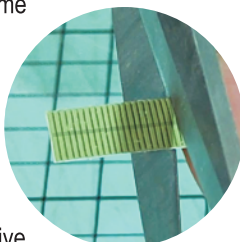


14 Blinds

(As in reality, they are only placed in some of the windows).

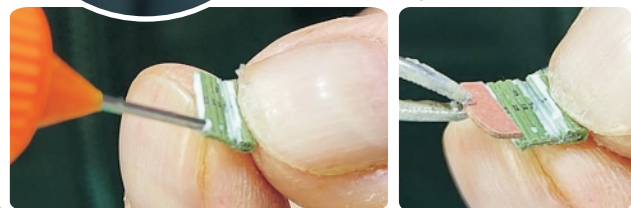
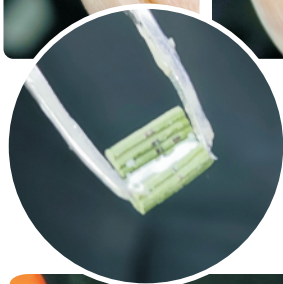
14a. Texture strips Ref.: 02PE0014

- Cut the strip of whatever you need and roll it up on the side and roll the adhesive part of the adhesive part of the texture inwards to the chosen height. It is advisable to fix the adhesive with **Crystal Glue** and hold it in position for 20 to 30 seconds.



14b. Supports

- Apply **Crystal Glue** on both contact parts, allow to dry for 5 to 10 seconds and glue and allow to dry definitely.



14c.

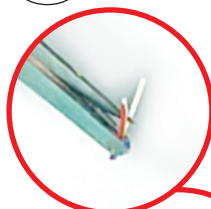
- Apply **Crystal Glue** to the back of the blind and place in place. See image.



15 Handles

15a.

- Remove the protective paper from the adhesive on the handle and place it on the door. See image.



TIP

- Put a few dots of **Crystal Glue** on the contact areas of the doors and wait about 10 seconds before putting the handle on, previously removing the included adhesive protector.



Finished model.



Attention: this product is not a toy. It is a detailed scale model for collectors. Not suitable for children under 12 years of age.

Colour PDF instruction manual downloadable at www.redutex.com

USER'S MANUAL

KIT OF **Arkitextura**
Redutex

New construction concept
Professional level at your fingertips



Railway Station (MZA)
Neo-mudéjar style (N) 1:160

Hyper-realistic, easy and fast



Includes:

- Set of structural parts.
- **Redutex** pre-configured façade cladding.
- **Redutex** 3D textures
- **Redutex** complements; Doors, windows, cornices, windowsills, chimneys and handles.
- Assembly products.



Handmade product

In some cases, the colours may vary from the model supplied.

©2022 Made in Spain by NEWKIT MODEL S.L.

Tel. +34 918753727 / Phone: +34 671456465 / info@redutex.com

www.redutex.com